

Using Digital Archives to Create a Research Network of Japanese Cultural Resources in the UK and Utilizing Digital Resources for Japanese Studies

デジタルアーカイブによる在英日本文化資源の組織 間共有と教育的活用実践

30 July 2021

Ryoko MATSUBA

Sainsbury Institute for the Study of Japanese Arts and Cultures and University of East Anglia

Research Outline

英国内での組織間・研究者間のネットワークを構築し、日本文化資源のデジタル化をすすめること、また、集まったデジタル資源をARCのシステムを使って公開していくこと、さらに、英国の若手研究者および学生がそれらの資源を活用できるようにし、国際的な学術交流を活性化させること。

This research project has been undertaken jointly by the Sainsbury Institute for the Study of Japanese Arts and Cultures (SISJAC) and the Art Research Center, Ritsumeikan University (ARC). It is creating a pilot project centred on the construction of a portal site for an online open access database that will make accessible research materials in UK collections. In parallel, the project seeks to enhance research networking among curators in UK museums with Japanese collections.

SISJAC and the University of East Anglia (UEA) have established a new MA programme started in September 2020. The development of an online catalogue will provide opportunities for our students to be involved in the creation of a cutting-edge resource and help to foster relationships with leading museum collections in UK, providing a state-of-the-art resource for research and teaching. This should lead us to a richer, more powerful understanding of the emergence of Japanese arts and cultures.

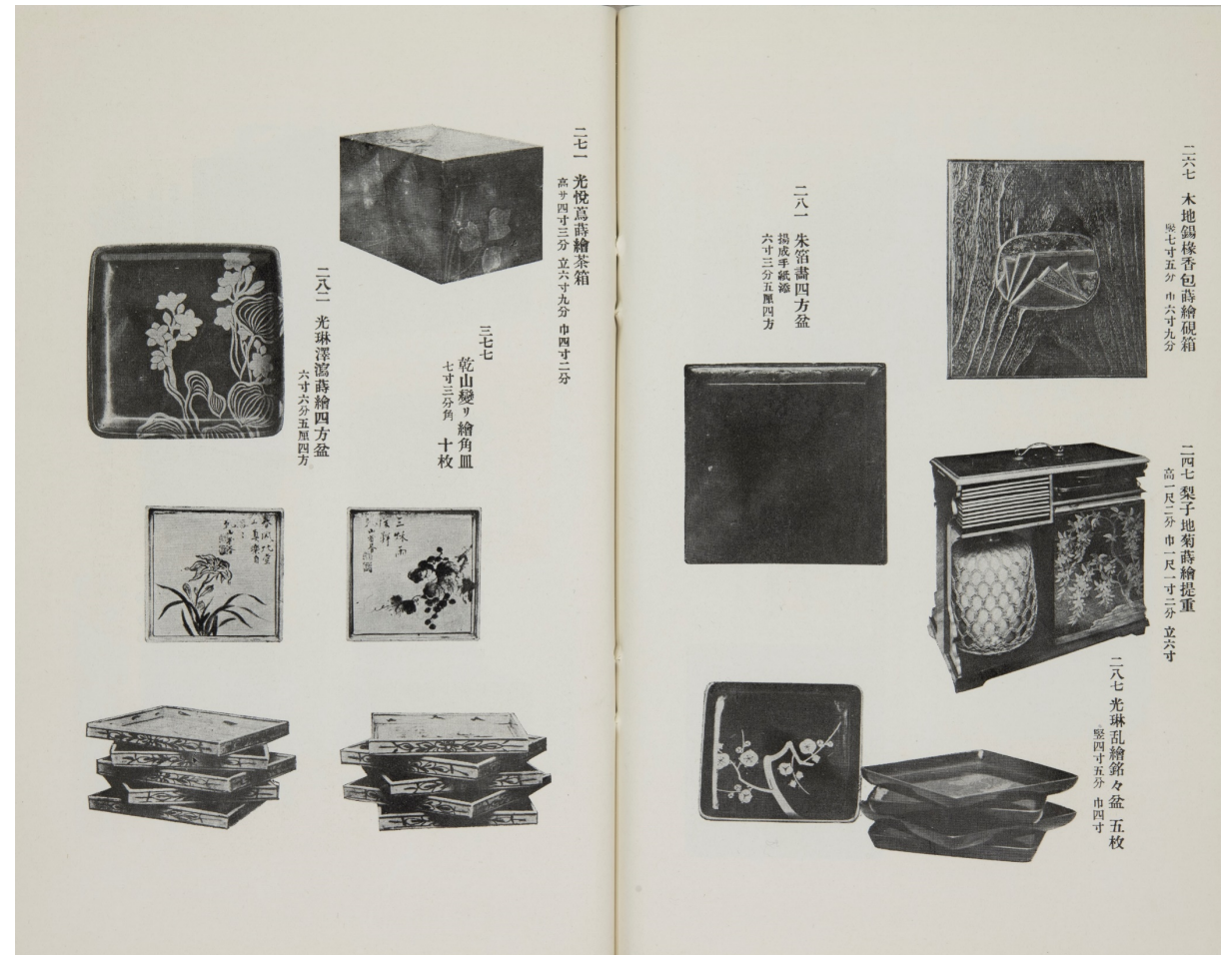
Report on the

Activity

① SISJAC auction catalogue archiving project (158 volumes of Japanese auction catalogues between the late Meiji and Taisho)

The project started to digitise 158 volumes of Japanese auction catalogues from the SISJAC collections (*uritate mokuroku*).

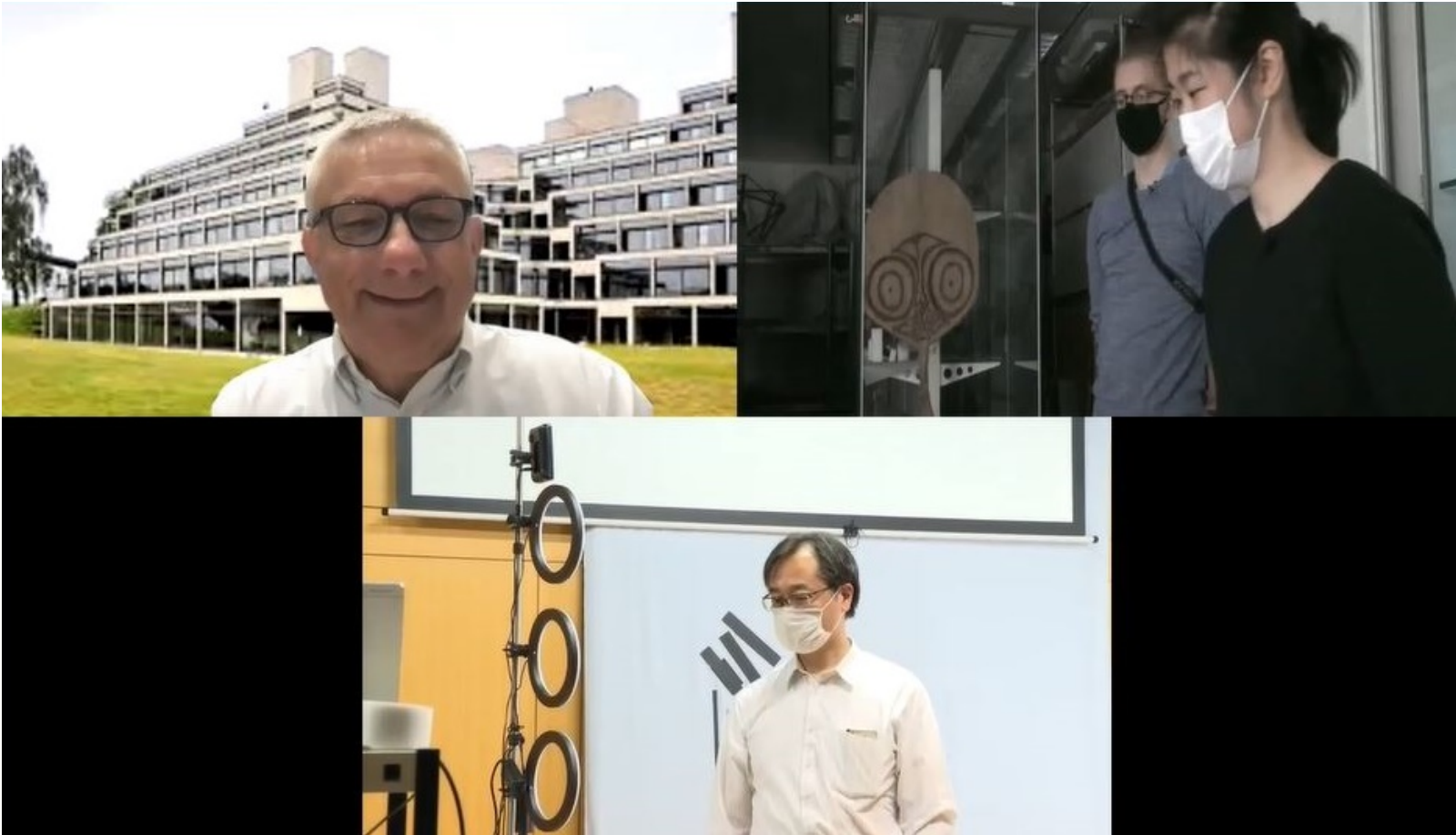
The project also runs an MA research assistantship programme for 12 weeks to teach digital archive theory and technique.



Report on the

② Activity

SISJAC-ARC Digital Archive Technical Workshop: Hanging scroll



Report on the

Activity

- ③ SISJAC-ARC Digital Archive Technical Workshop: Photogrammetry

Report on the

Activity

④ Faith of Faces display project

Female Shinto Deity

Kamakura period (AD 1185-1333)

Materials Prunus, White Plaster

Ichiboko-Zukuri (single block carving)

h. 940 mm

UEA1146



Report on the

Activity

④ Faith of Faces display project

<https://japaninnorwich.org/faces-of-faith/>



Report on the

Activity

④ Faith of Faces display project

Ex Maeyama Hisakichi collecton
Photographic plate from the Image collection
database, Tokyo National Research Institute
for Cultural Properties



Shotoku taishi cohort



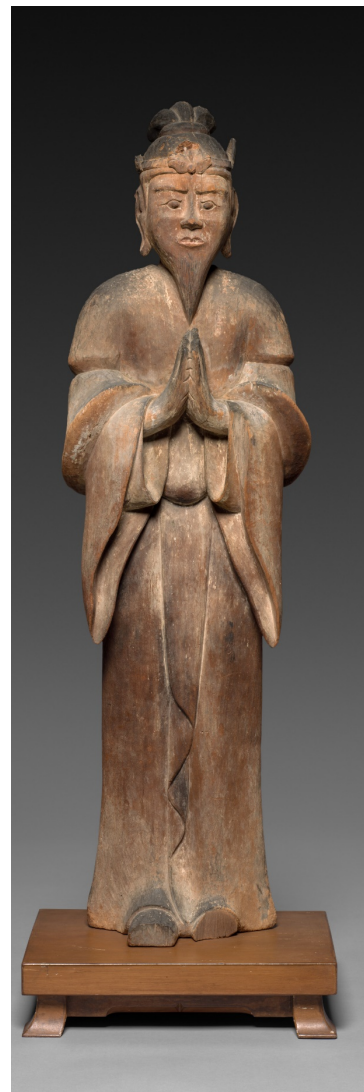
MET



ROM



Asian Art Museum,
San Francisco



Cleveland



AIC



SISJAC